



## Sink FM

Tank on the right

Kitchen Sinks

Code: 1971 461



### DETAILS

|                        |   |
|------------------------|---|
| Edge/Installation Type | Standard (8 mm Edge)  |
| Finish                 | Foster brushed  |
| Material               | AISI 304 stainless steel  |
| Texture                | Microfoster   |
| Base                   | 45 cm   |
| Dimensions             | 860x500 mm  |
| Standard fittings      | Fixing hooks, gasket, drain, overflow and siphon, boxed packing |
| Mixer holes            | 1 standard hole - 2nd hole on request                           |
| Built-in hole          | 840 x 480 mm  |

|         |     |
|---------|-----|
| Drainer | Yes |
|---------|-----|

|       |       |
|-------|-------|
| Width | 86 cm |
|-------|-------|

|                |             |
|----------------|-------------|
| Bowl dimension | 362,5x400mm |
|----------------|-------------|

|                 |        |
|-----------------|--------|
| Number of bowls | 1 bowl |
|-----------------|--------|

|               |            |
|---------------|------------|
| Waste fitting | 3,5" drain |
|---------------|------------|

## FEATURES

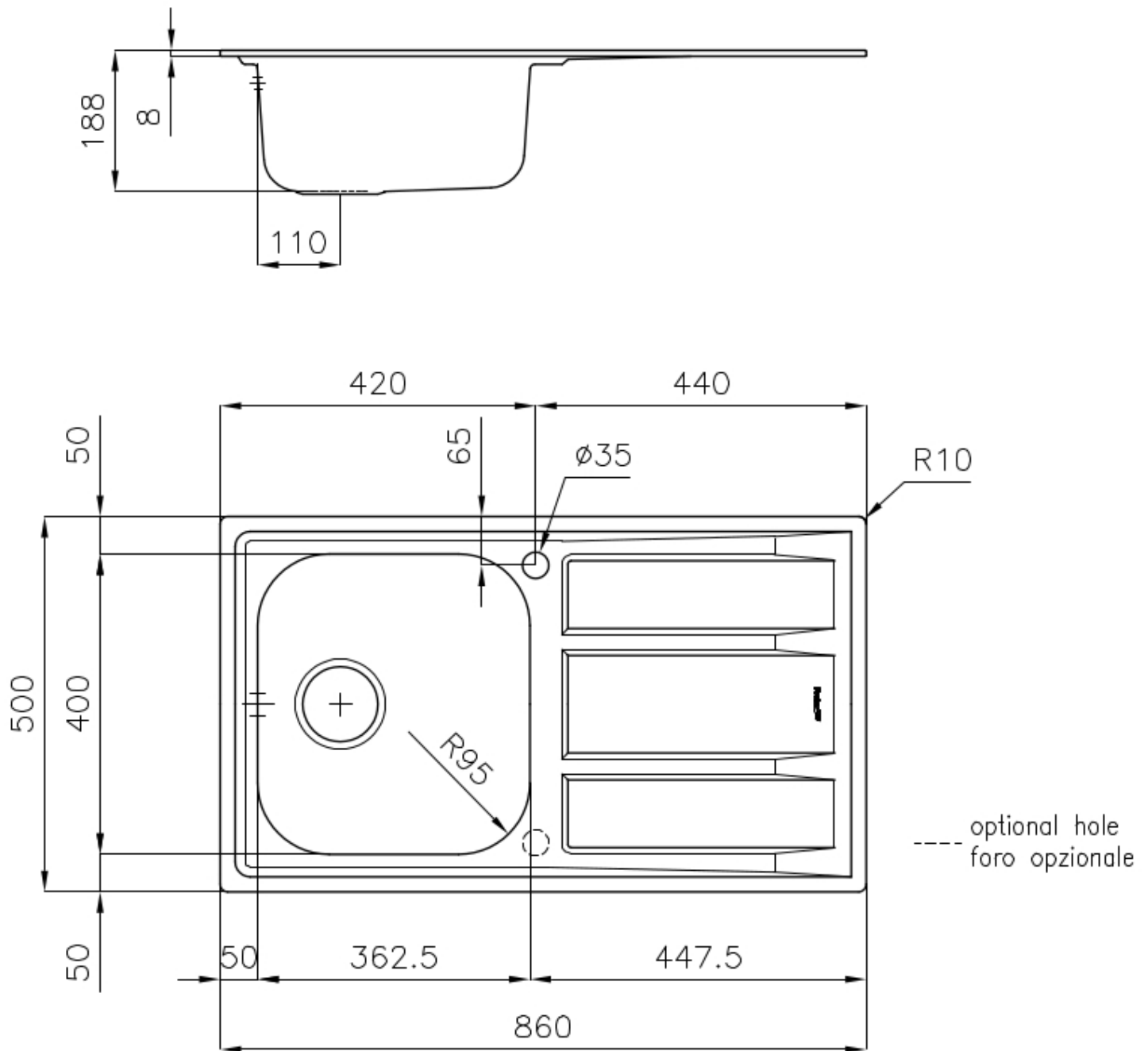
|                          |  |
|--------------------------|--|
| 2nd / 3rd hole available | The sink can be customized with the execution on request of additional holes, usable for double-hole mixers, for remote controlled drains or for the installation of soap dispensers. The positions are marked on the drawings with dotted line holes. |
|--------------------------|--|

|             |  |
|-------------|--|
| Added value | Foster uses steel thicknesses higher than those used on average by other manufacturers. This is how, thanks to our long experience, we know how to make sinks of superior quality and with a better resistance to aging. |
|-------------|--|

|                           |  |
|---------------------------|--|
| Basket 3,5" waste fitting | The drain is equipped with a large 3.5" drain, with the practical basket cap that prevents the discharge of solid parts. |
|---------------------------|--|

|                  |  |
|------------------|--|
| Sliding brackets |  |
|------------------|--|

## TECHNICAL DATA



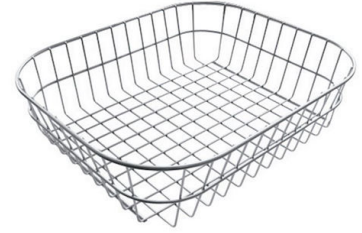
## OPTIONAL ACCESSORIES



**Glass chopping board**  
8631 300



**HPDE Chopping board**  
8657 001



**Stainless steel basket**  
8611 000

## RECOMMENDED PAIRINGS



**Mixer Tap Gamma 3 vie - satin**  
8496 100



**Mixer Tap Lorenzo**  
8466 000



**Mixer Tap NYC**  
8486 000

## OPTIONAL AUTOMATIC WASTE FITTINGS



**Automatic waste fitting**  
8407 100



**Automatic waste fitting**  
8407 000



**LIRA automatic waste fitting**  
8407 103